

Smolt Survival and Adult Sockeye Studies

Tobias Kock, Scott Evans, and Russell Perry
U.S. Geological Survey

Michael Porter, Brian Saluskin, and Mark Johnston
Yakima Nation Fisheries

Pat Monk and Richard Visser
Bureau of Reclamation

Exciting Developments Upstream

Cle Elum Dam Fish Passage

FISHERIES
YAKAMA

2018 Yakima Basin Coho

Yakima River Summer/Fall Chinook Program

Building Construction to
YN SOCKEYE RESTORATION PROJECT:
The Outro (Mackinaw Removal)

BRIAN SALUSKIN, FISH PASSAGE BIOLOGIST
MARK JOHNSTON YN RESEARCH SCIENTIST & DAVE FAST YN SENIOR RESEARCH SCIENTIST

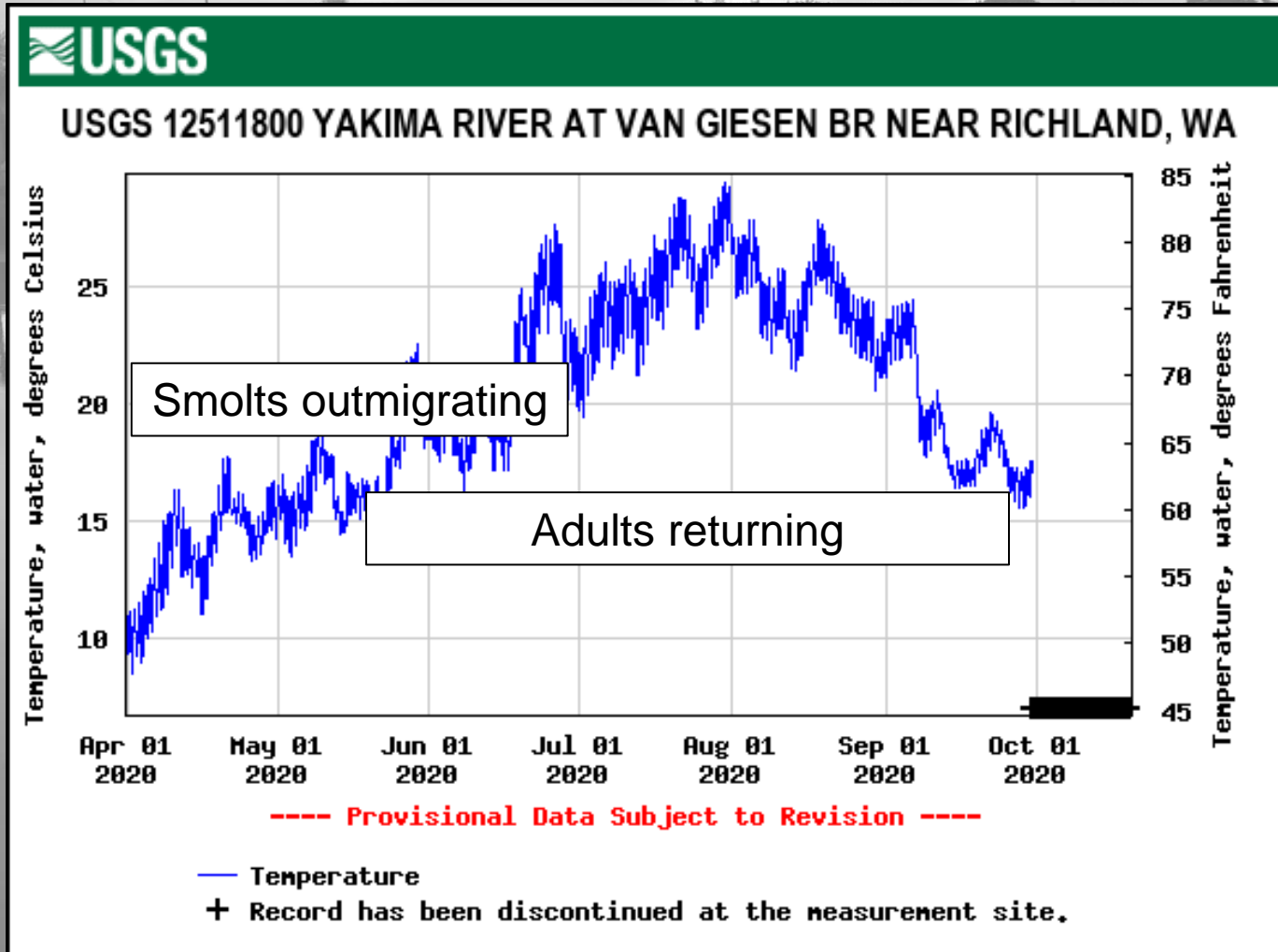
achxilpanisha ishchit "making a way"

YAKAMA NATION
RESTORATION

U.S. DEPARTMENT OF THE INTERIOR
BUREAU OF RECLAMATION

WASHINGTON DEPARTMENT OF FISH AND WILDLIFE

Lower River Challenges



Challenges in the Lower River

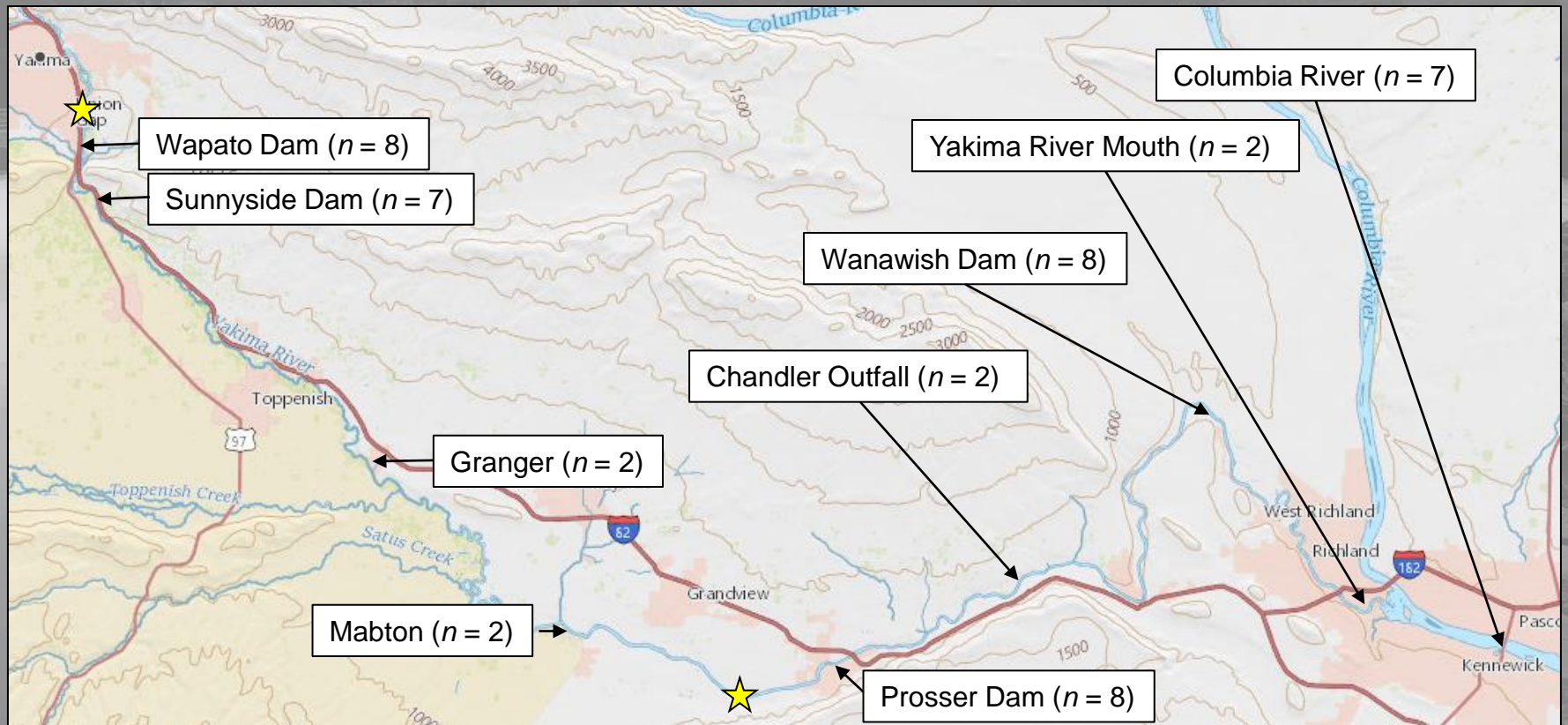


Multi-year Telemetry Studies

Species	2018	2019	2020
Yearling Chinook salmon	429	590	347*
Steelhead	313	350	376*
Subyearling Chinook salmon	344	393	495*
Lamprey	97	126	26*
Adult smallmouth bass		10	
Northern pikeminnow		10	
Adult Chinook salmon		4	
Adult sockeye salmon	20	60	32 RT 112 PIT
Total =	1,203	1,543	1,388

*Compressed tagging schedule due to COVID 19

Study Area for Smolt Studies



2019 Paired Releases at Prosser Dam



Cumulative survival = 0.735

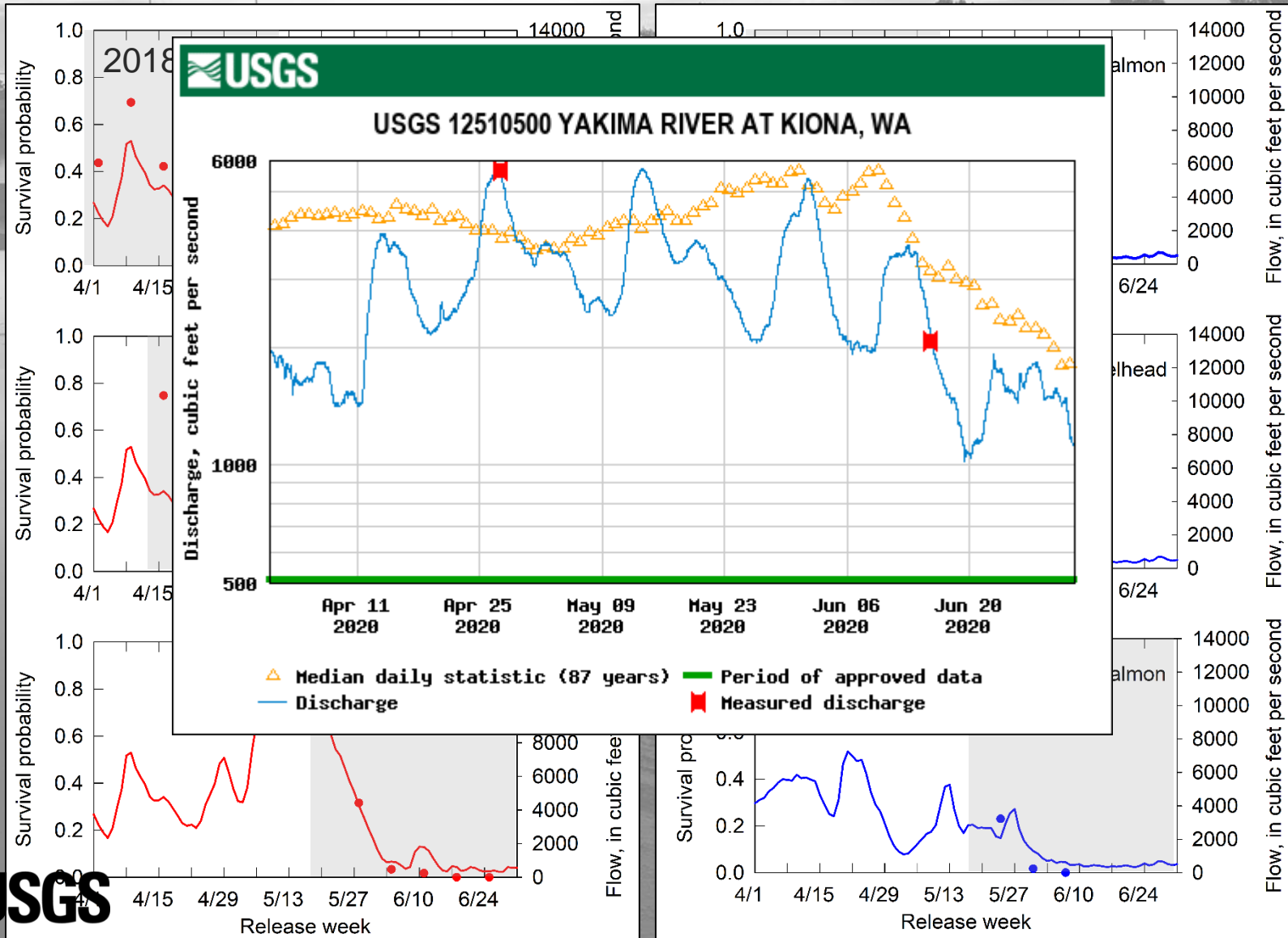
Percent of fish using the canal

Yearling Chinook salmon = 21.6%

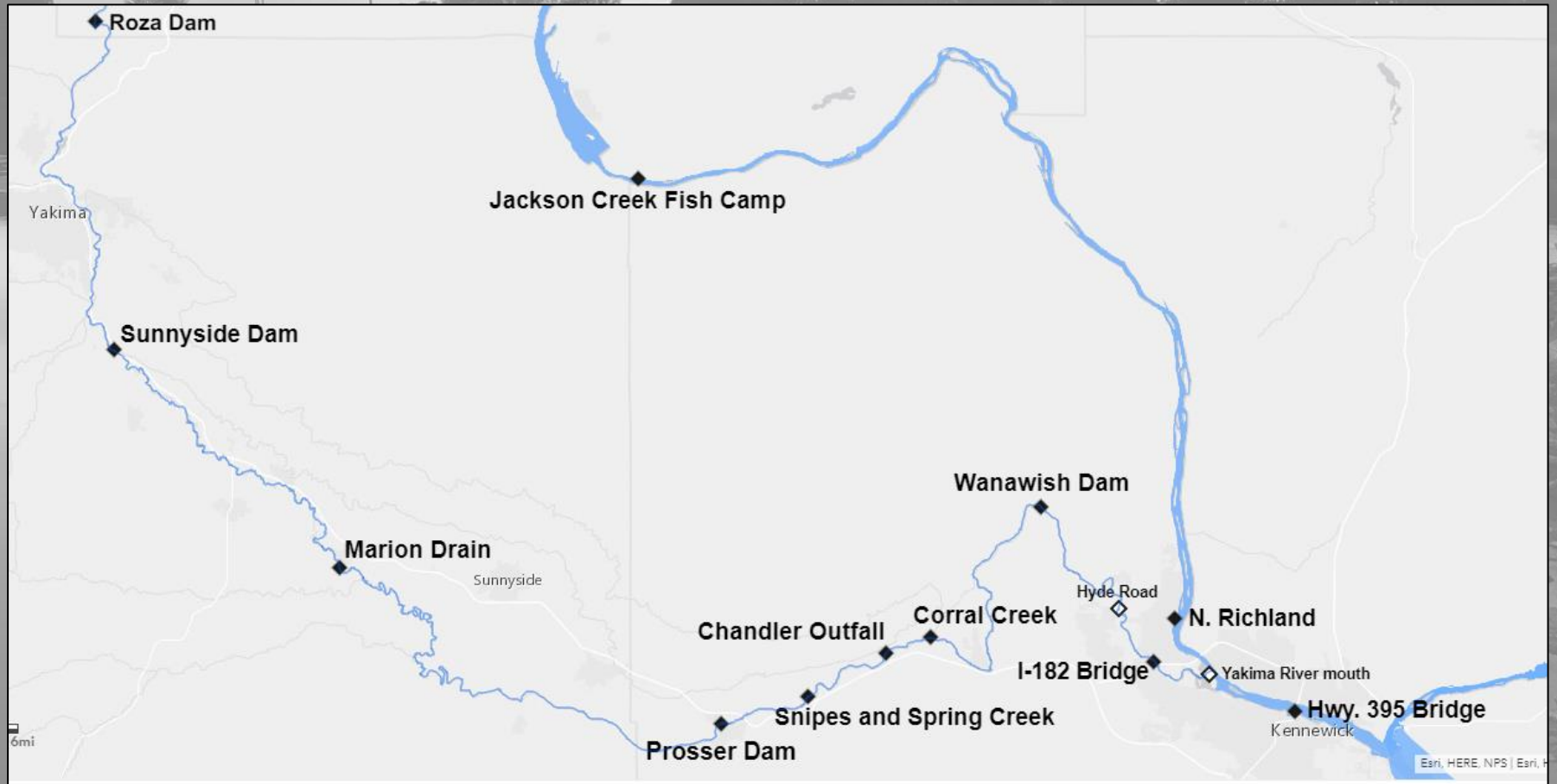
Steelhead = 51.3%

Subyearling Chinook salmon = 71.0 %

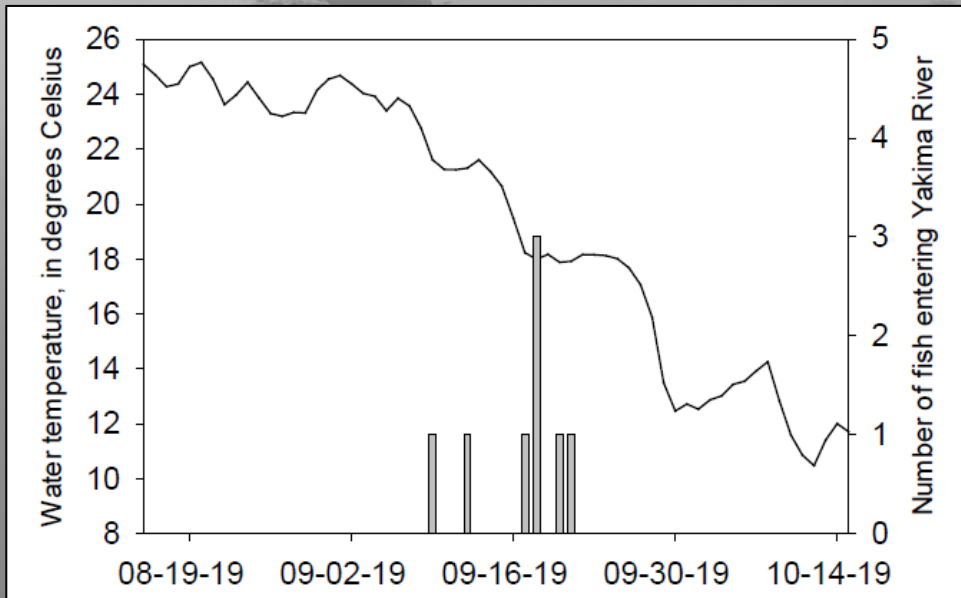
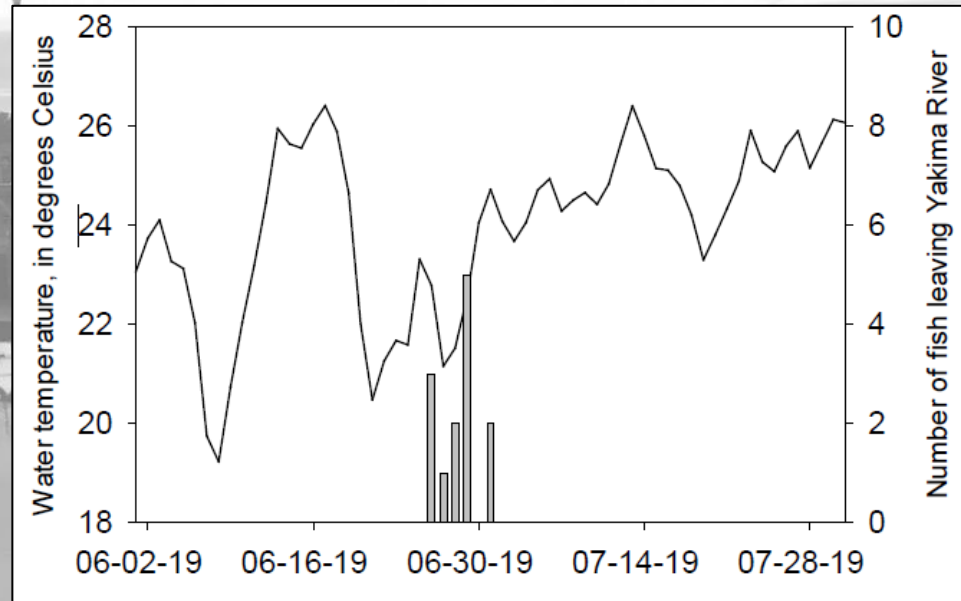
Cumulative Survival and Flow



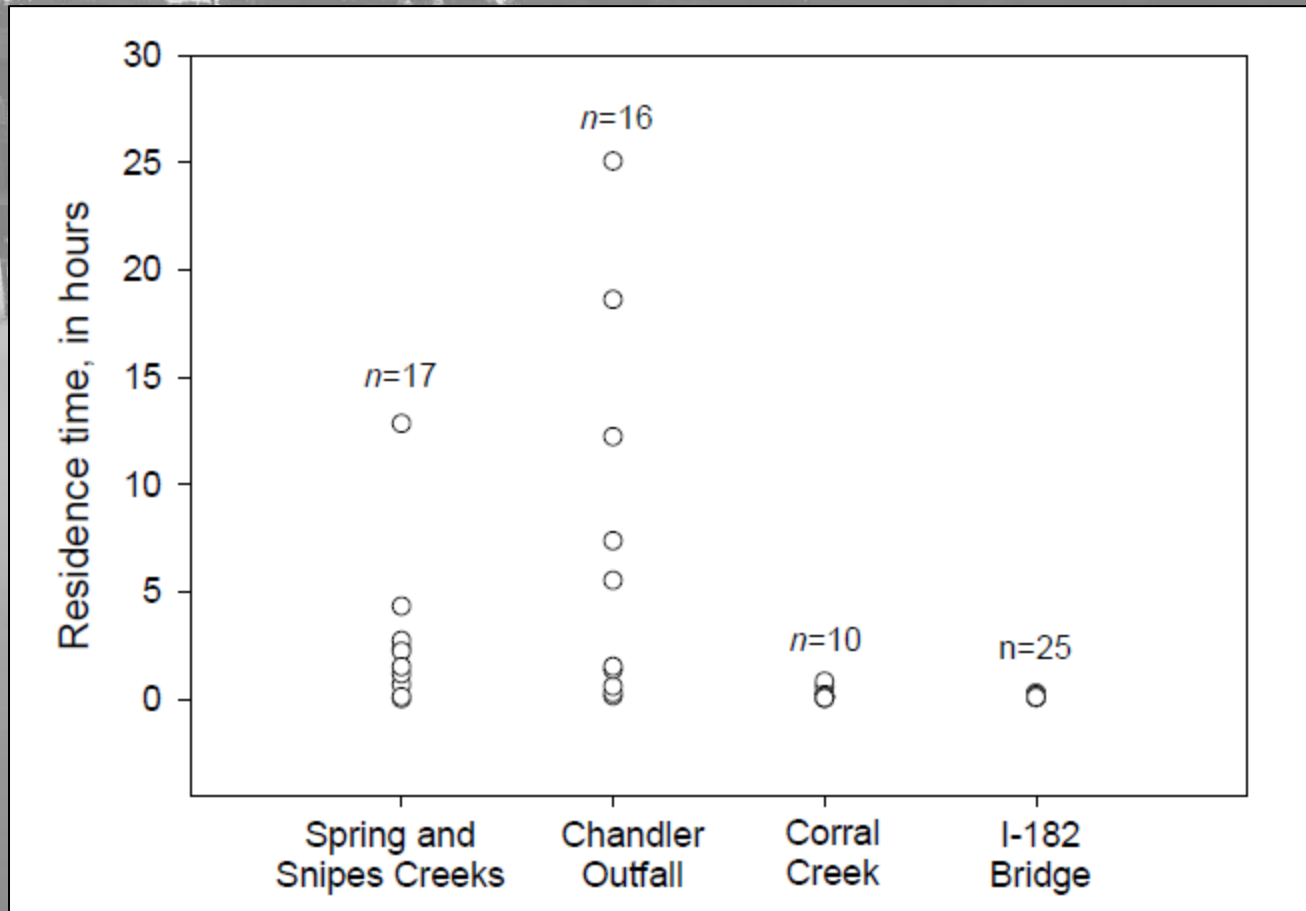
Study Area for Adult Sockeye Study



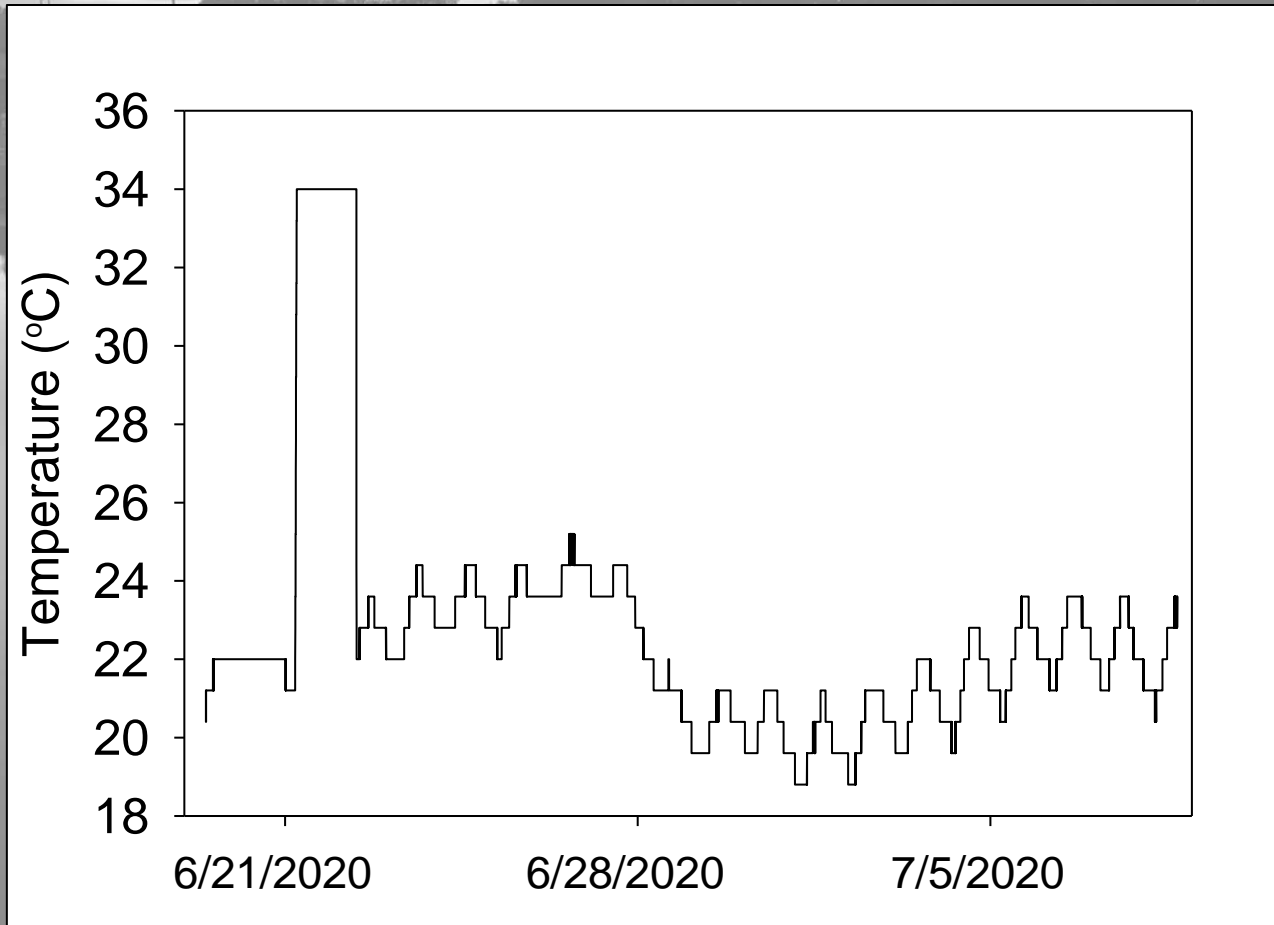
2019 Results



2019 Results



Temperature Recording Transmitters



Summary

- Multi-year tagging studies providing numerous insights in factors affecting movement and survival of juvenile and adult salmon in the lower Yakima River
- Analyses currently underway to summarize what has been learned and to design additional studies in 2021 and beyond

Questions

