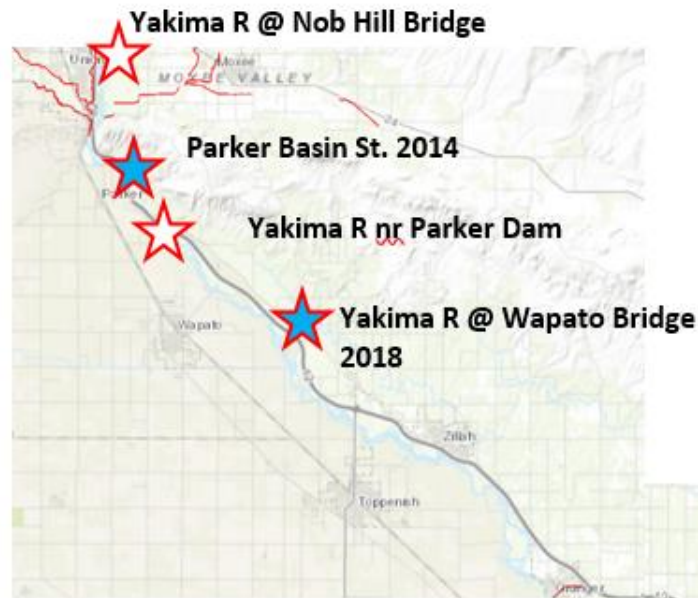


RESEARCH PROJECTS/STREAM CATEGORIES UPDATE

Ecology's Lower Yakima River WQ Improvement Efforts



Category 5 - TMDL-Eligible Reach



Category 5 Upgrades to TMDL-Eligible



Basin Station Tributary Studies & Parker/Prosser Yakima Bracket



WILDFIRE IMPACTS & RESTORATION

Burned Area Emergency Response Projects (BAER)

Schnieder Springs Fire 2021

113,000 acres

50% Upper Naches River Basin riparian forests burned

11 Tributaries involved

- Upper Naches River
- American River
- Bumping River/Reservoir
- Rattlesnake Creek
(main, north fork, Little Rattle)
- Hoodoo Creek
- Devil Creek
- Dry Creek (2019)
- Gold Creek
- Nile Creek
- Orr Creek
- Swamp Creek

Evans Canyon Fire 2020

84,000 acres

20% Upper Yakima Tributaries TMDL

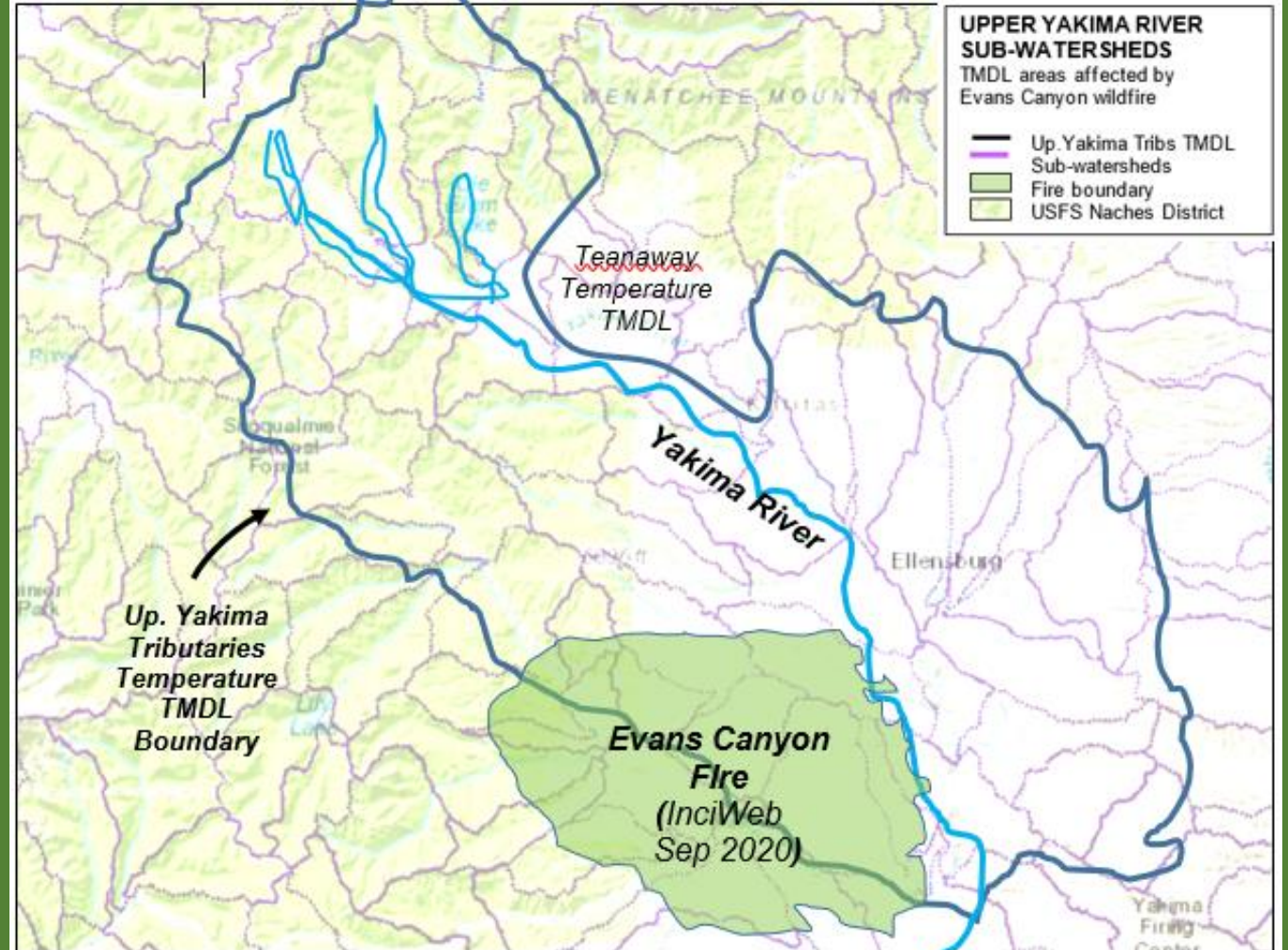
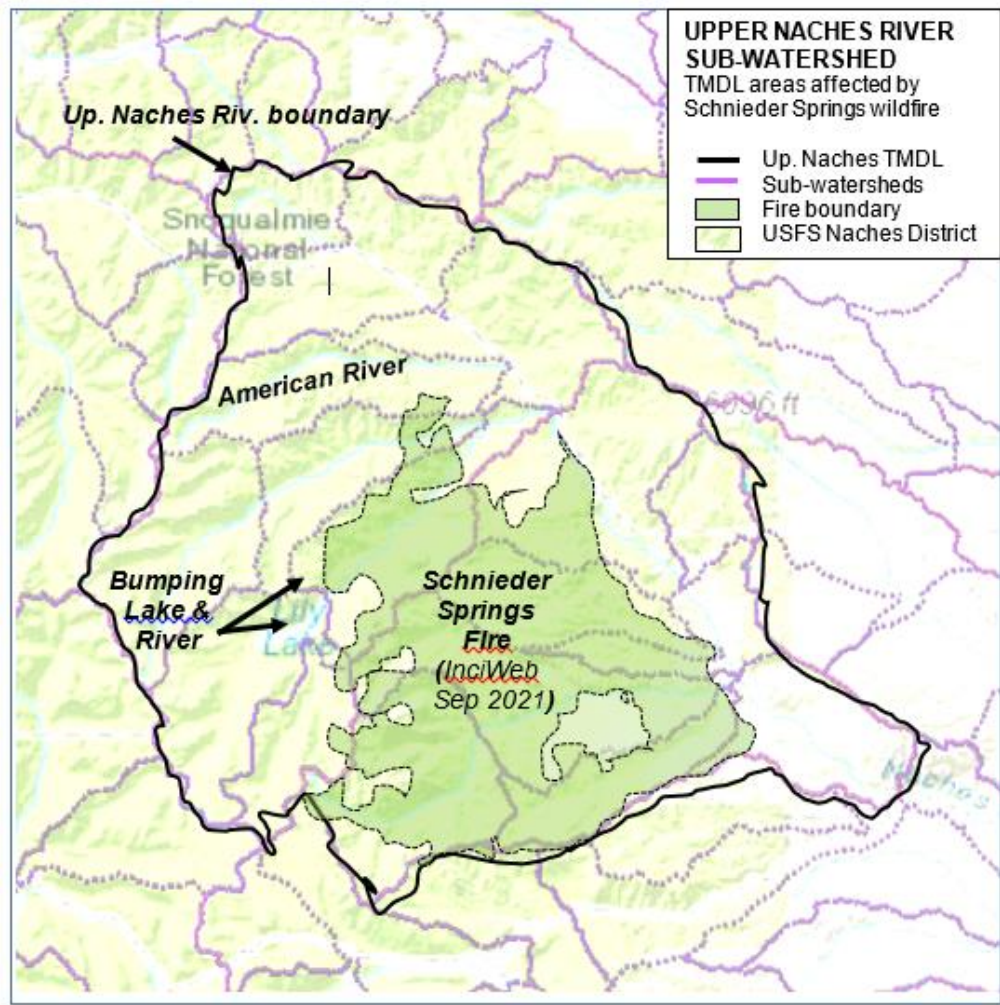
3 Tributaries involved

- Upper Wenas Creek
- Umtanum Creek
- Upper Manastash Creek



WILDFIRE IMPACTS & RESTORATION

Burned Area Emergency Response Projects (BAER)



COLUMBIA AND LOWER SNAKE RIVERS TEMPERATURE TMDL

Final Release: August 2021

Area: Pacific Ocean to Canada; Applies to Washington, Oregon, Coleville Tribal and Spokane Tribal Jurisdictions



Columbia and Lower Snake Rivers Temperature Total Maximum Daily Load

U.S. Environmental Protection Agency
Region 10
1200 Sixth Avenue, Suite 155
Seattle, WA 98101-3188



August 13, 2021

Columbia and Lower Snake River Temperature TMDL

August 13, 2021

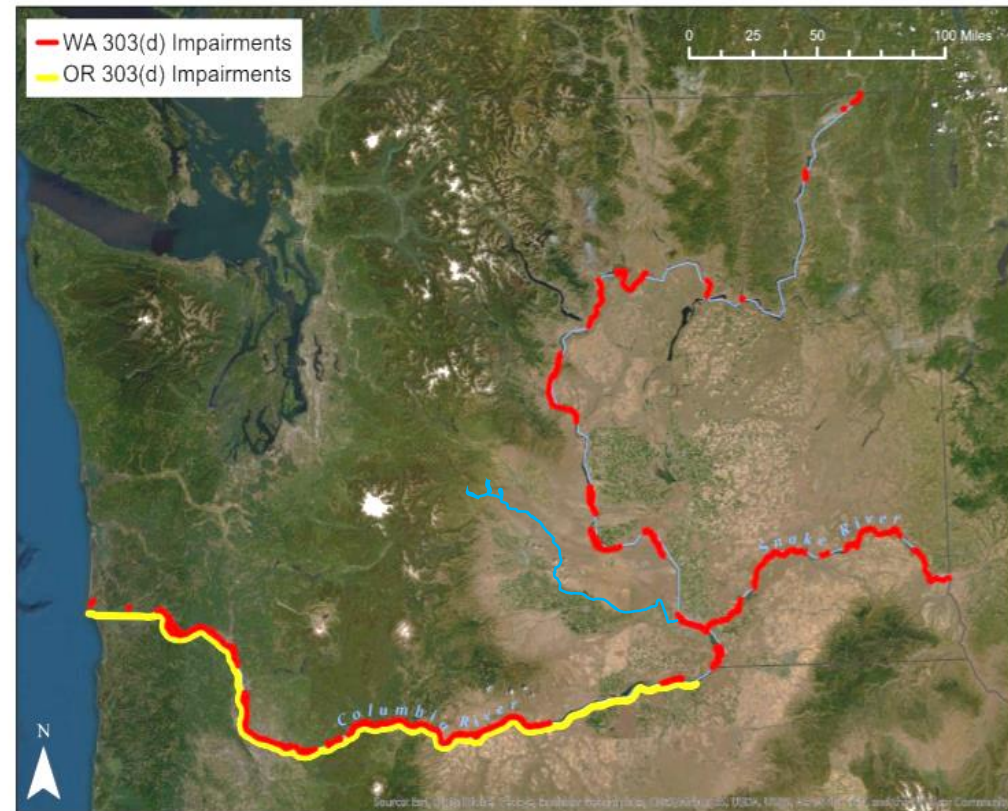


Figure 1-1 Washington and Oregon waterbodies in the Columbia and lower Snake Rivers identified as impaired for temperature pursuant to CWA 303(d)

COLUMBIA AND LOWER SNAKE RIVERS TEMPERATURE TMDL

Final Release: August 2021

Area: Pacific Ocean to Canada; Applies to Washington, Oregon, Colville Tribal and Spokane Tribal Jurisdictions

GOVERNMENTS: Washington
Oregon
Colville Tribe
Spokane Tribe

DAMS: 15

TRIBUTARIES: 23 (Non-Point)

WQ CRITERIA 6 Numeric
1 Narrative (refugia)

FACILITIES: Point Sources

YAKIMA RIVER: 21.2°C (Aug max)

TEMP REDUCTION: 1.2°C

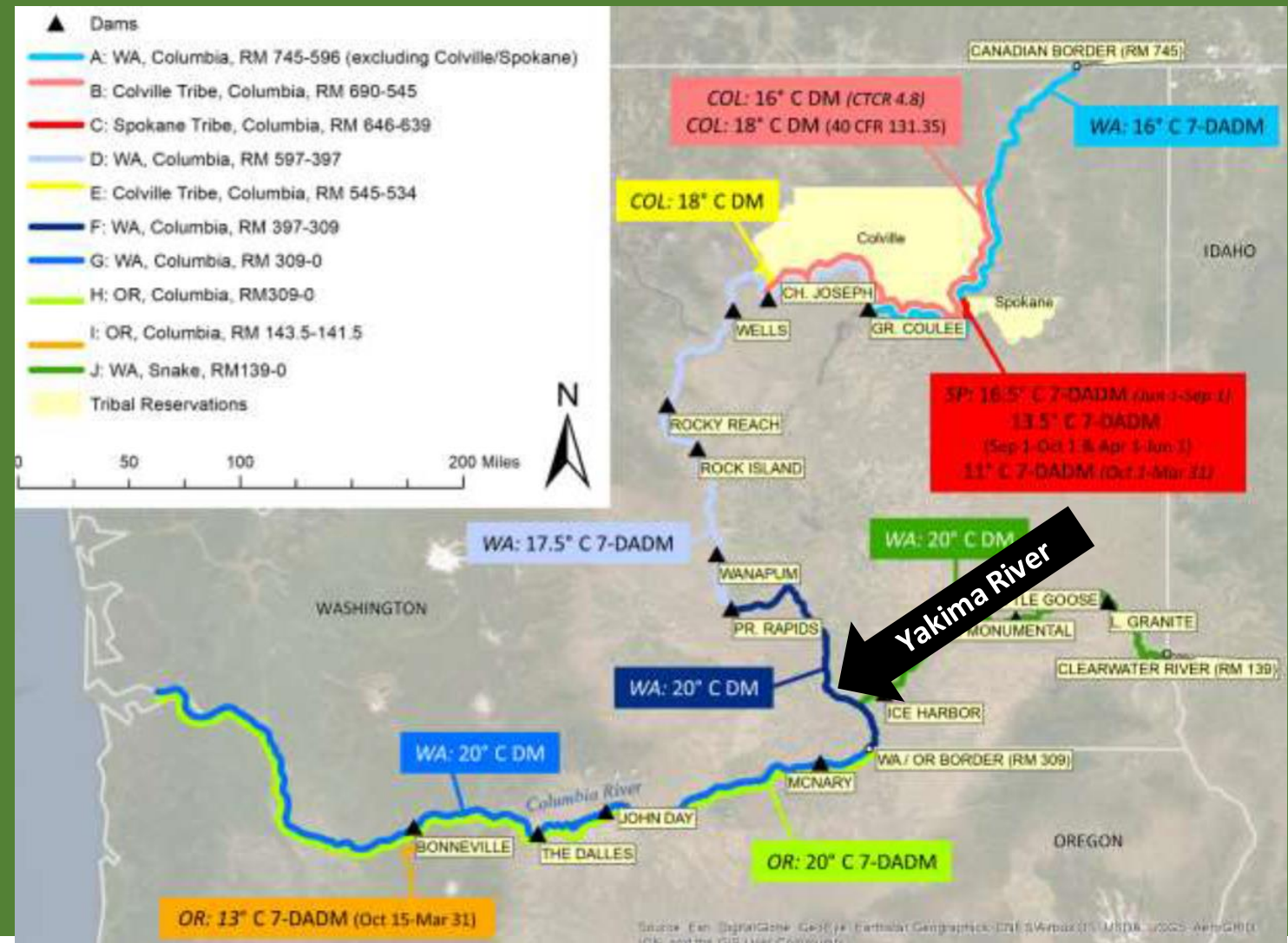


Figure 2-1 Columbia and Lower Snake River temperature WQ Standards and jurisdictions